

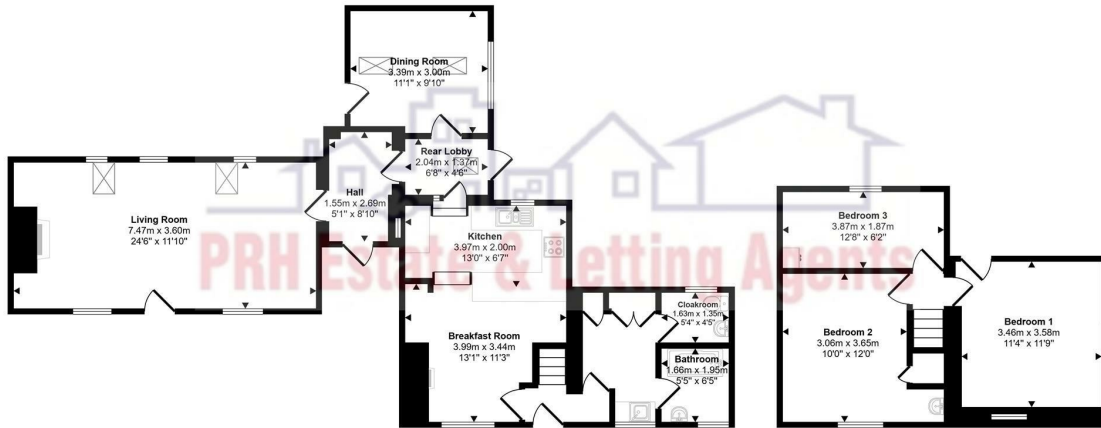


Morvah, Pendeen

£850,000



Approx Gross Internal Area  
120 sq m / 1294 sq ft



The accuracy of these particulars is not guaranteed nor do they form part of any contract. Applicants should verify details by personal examination and enquiry.

PRH is a trading name of PRH Lettings Limited. Registered office: 15 Alverton Street, Penzance, Cornwall, TR18 2QP. Registered in England No. 6667569



4 The Green Market, Penzance, Cornwall, TR18 2SH T: 01736 363816 E:mail@prhpenzance.co.uk

Wesley Cottage  
Morvah, Pendeen  
TR20 8YX

£850,000

## KEY FEATURES

- Envidable Location
- Sea & Rural Views
- Spacious Family Home
- Garden & APPROX 1/2 ACRE LAND
- Offered Chain Free
- EPC E (49 74)
- Stunning Detached Period Home
- Large Outbuilding
- Three Bedrooms
- Large Main Reception Room

## DIRECTIONS

From Penzance proceed northwest through the villages of Heamoorm Madron and Bosullow. Keep to the right as it leads to the B3306 towards Zennor. Rosmergy is situated on the left hand side of the road.



*Location, Location, Location! And This One Has It All... and History!*

*They say location is everything, and this exceptional cottage delivers in spades, boasting an unrivalled position on the dramatic North Cornish coast. Prepare to be captivated by the simply breathtaking views, where rugged coastline meets rolling countryside in a stunning visual symphony.*

*But the allure doesn't stop at the scenery. This spacious and versatile cottage comes with a unique historical connection: imagine owning a home where the very founder of Methodism, John Wesley, once preached! A truly special provenance adding an extra layer of character and intrigue to this already remarkable property.*

*Inside, the layout offers fantastic flexibility. The ground floor features a welcoming breakfast room, a kitchen, a practical rear lobby, a generous dining room perfect for gatherings, a comfortable living room to relax and soak in those views, plus a convenient cloakroom and separate WC & Bathroom. Upstairs, three well-proportioned bedrooms await.*

*The outside space is equally impressive. A detached tractor shed offers practicality, ample parking ensures convenience, and the stunning garden is a true haven, complete with a purpose-built lookout platform – your private stage to admire those incredible vistas! An outbuilding with the utilities, a shower & WC. In addition to the garden, there is a substantial field.*

*Nestled within the charming, little pocket of houses that is Rosemergy, this property enjoys an enviable position between the picturesque villages of Morvah and Zennor. Situated directly on the iconic B3306, you'll find yourself immersed in an Area of Outstanding Natural Beauty, where every turn offers a postcard-perfect scene. This isn't just a home; it's a lifestyle, a connection to history, and a front-row seat to the unparalleled beauty of the Cornish coast.*

